



**PUMP COMPANY**

Zoeller Family of Water Solutions™

MAIL TO: P.O. BOX 16347 • Louisville, KY 40256-0347  
 SHIP TO: 3649 Cane Run Road • Louisville, KY 40211-1961  
 (502) 778-2731 • 1 (800) 928-PUMP • FAX (502) 774-3624

Product information presented here reflects conditions at time of publication. Consult factory regarding discrepancies or inconsistencies.

visit our web site:  
[www.zoeller.com](http://www.zoeller.com)

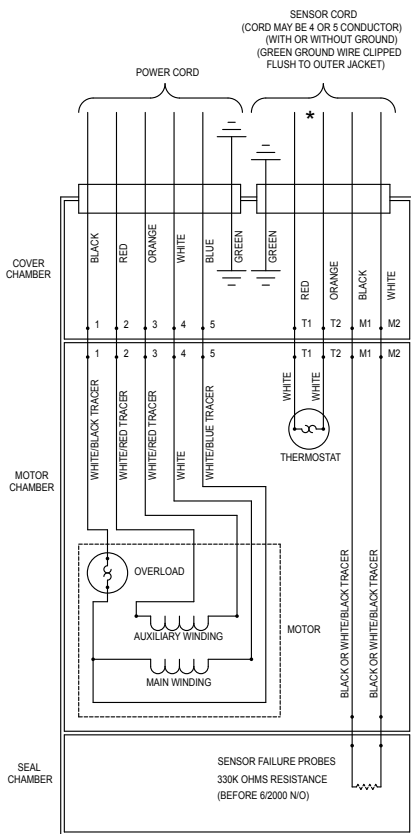
**REPLACEMENT PARTS LIST  
 FOR GRINDER MODELS:  
 E840 230V 1 PHASE  
 I840 200V 1 PHASE  
 F840 230V 3 PHASE  
 G840 460V 3 PHASE  
 J840 200V 3 PHASE  
 BA840 575V 3 PHASE**

**TO ORDER REPLACEMENT PARTS:**

**PLEASE FURNISH THE FOLLOWING INFORMATION:**

- Model Number.
- Part Number of Pump.
- Part Number and Description of part.

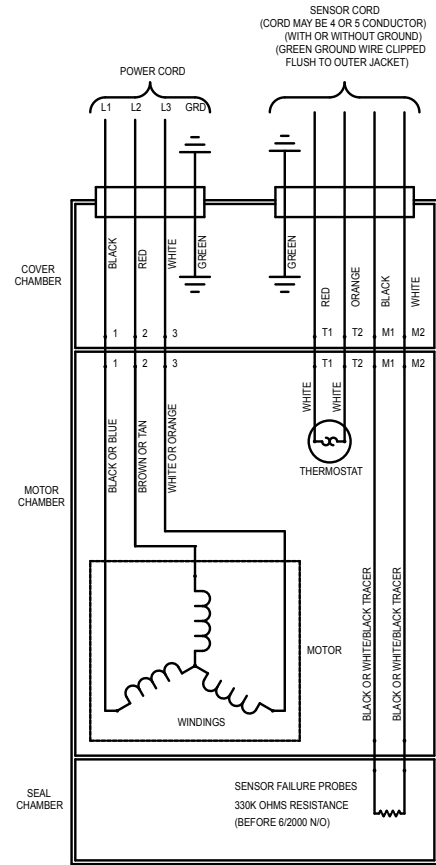
SOOW CORDAGE



008751

\*Thermostat Optional

WIRING DIAGRAM FOR MODELS  
 "E840" All Revisions  
 "I840" All Revisions  
 "11/93 thru Current



008752

WIRING DIAGRAM FOR MODELS  
 "F840" All Revisions  
 "G840" All Revisions  
 "J840" All Revisions  
 "BA840" All Revisions  
 "11/93 thru Current

# REPLACEMENT PARTS LIST FOR MODELS "E840"

See back page for illustration.

REF NO.	DESCRIPTION	QTY	NOTES	MODELS:			
				E840-A	E840-B	E840-C	E840-D
				11/93 thru 6/98	7/98 thru 11/02	12/02 thru 8/06	9/06 thru Current
1	COVER & CORD 200/230V/1PH GRINDER	1	3	009049	009049	015826	015826
2	• SEAL,SQ-RING COVER "840"	1		007773	007773	007773	007773
3	• SEAL,THRU WALL TERM	9		003402	003402	003402	003402
4	HOUSING,MTR-& STR 200/230V/1PH/"840"/EMD	1	4,5	009050	009050	009050	009050
	HOUSING,MTR-& STR 200/230V/1PH/"840"/GE		4,5	010266	010266	010266	010266
5	• OIL,DIELECTRIC-(57 OZ CAN)	1		009051	009051	009051	009051
6	ROTOR ASM 200/230V/1PH/"840"/EMD	1	4,5	009052	009052	009052	009052
	ROTOR ASM 200/230V/1PH/"840"/GE		5	010269	010269	010269	010269
7	RING,SNAP-5100-100 TRUARC	1		007769	007769	007769	007769
8	KEY	1		007775	011711	011711	011711
9	CORDAGE TERM&SEAL/20'	1		009053	009053	009053	009053
10	• SEAL,CORD-ASM	1		011064	011064	011064	011064
11	CORDAGE TERM&SEAL/20'	1	3	009054	009054	015829	015829
12	• SEAL,CORD-ASM/POWER CORD	1		009455	009455	015634	015634
13	CASE & SEAL "840"	1		008690	008690	015830	015830
14	• PLUG,TEST	3		034051	034051	015023	015023
15	• BEARING,RADIAL .4724 ID	1		006703	006703	006703	006703
16	• BEARING,7306-P "840/6840"	1		007765	007765	007765	007765
17	• SEAL,SQ-RING ADAPTER 840	1		007771	007771	007771	007771
18	• SENSOR,MOISTURE ASM "840"	2		007770	007770	007770	007770
19	ADAPTER ASM GRINDER	1	6	009055	009055	009055	009055
20	• OIL,DIELECTRIC (11 OZ CAN)	1		009056	009056	009056	009056
21	• SEAL ASM,SHAFT "840"	2		007763	007763	007763	007763
22	• SEAL,SQ-RING SEAL PLATE "840/6840"	1		007772	007772	007772	007772
23	PLATE,SEAL-MACH."840"	1		007757	007757	007757	007757
	IMPELLER-MACH BRASS	1		007758	007758	007758	007758
24	IMPELLER-MACH DUCTILE IRON	1		153254	153254	153254	153254
25	HOUSING,PUMP-MACH "840"	1		008534	008534	008534	008534
26	CUTTER & DISC ASM GRINDER	1		009057	009057	009057	018603
27	SHIM SET FOR 820/840 GRINDERS	1		012632	012632	012632	012632
28	GUARD,CUTTER-PLASTIC 840	1		008528	008528	008528	008528
29	• SCREW,#6-32X.25RHM SL TC STLGR	1		001877	001877	001877	001877
30	• SCREW,.313-18 X1.25 HH CAP-SS	12		001908	001908	001908	001908
31	• SCREW,#10-24X.625"SH CAP SS.	4		007774	007774	007774	007774
32	• SCREW,.25-20 X .75LG HH SS (NYLOCK PRE-COAT 80)	1		009545	009545	009545	N/A
	• SCREW,.25-20 X 1 LG HH SS (NYLOCK PRE-COAT 80)			N/A	N/A	N/A	018602
33	• SCREW,.25-20X.75"SH CAP SS.	3		007768	007768	007768	007768
34	• SCREW,#10-24X.875-FLT SH CAP SS.	3		007761	007761	007761	007761
35	• WASHER,RETAINING-"840"	1		008533	008533	008533	008533
36	• WASHER,LOCK SS .312 ID	14		006402	006402	006402	006402
37	• SCREW,.313-18 X 1" HH CAP-SS	2		002608	002608	002608	002608
38	HANDLE-SS/SQ GUIDE RAIL(GRINDER)	1		010373	010373	016801	016801
39	RESISTOR	1		013740	013740	013740	013740
40	• WASHER,FLAT SS	2		008773	008773	008773	008773
41	DISC, CUTTER	1		007735	007735	007735	007735
42	CUTTER & SHIM ASM/5 BLADE/.75" SCREW	1		019697	019697	019697	N/A
	CUTTER & SHIM ASM/5 BLADE/1" SCREW	1		N/A	N/A	N/A	019698
▣	REBUILD KIT "840"	1		015832	015832	015833	018601

• Items included in Rebuild Kit.

▣ Not Shown in Illustration.

### NOTES:

- 1) See FM0160 Price Sheet for listing of parts prices.
- 2) "NA" indicates, not applicable.
- 3) If an "X" follows Model No., or Date Mfg. on brass ID tag, consult factory for ordering of this part.
- 4) Housing, MTR & Stator (Item 4) is preassembled at factory and must be replaced as a unit. Stator is permanently attached to the Motor Housing. Plug (Item 14) and Seal, thru Wall Term. (Item 3) are replaceable.
- 5) When ordering these parts, customer must identify if G.E. or EMD.
- 6) When ordering this part, customer must determine if an adapter with wings is required and specify when placing order.

© Copyright 2014 Zoeller® Co. All rights reserved.

# REPLACEMENT PARTS LIST FOR MODELS "I840"

See back page for illustration.

REF NO.	DESCRIPTION	QTY	NOTES	MODELS:			
				I840-A	I840-B	I840-C	I840-D
				11/93 thru 6/98	7/98 thru 11/02	12/02 thru 8/06	9/06 thru Current
1	COVER & CORD 200/230V/1PH GRINDER	1	3	009049	009049	015826	015826
2	• SEAL,SQ-RING COVER "840"	1		007773	007773	007773	007773
3	• SEAL,THRU WALL TERM	9		003402	003402	003402	003402
4	HOUSING,MTR-& STR 200/230V/1PH/"840"/EMD	1	4,5	009061	009061	009061	009061
	HOUSING,MTR-& STR 200/230V/1PH/"840"/GE		4,5	010267	010267	010267	010267
5	• OIL,DIELECTRIC-(57 OZ CAN)	1		009051	009051	009051	009051
6	ROTOR ASM 200/230V/1PH/"840"/EMD	1	4,5	009052	009052	009052	009052
	ROTOR ASM 200/230V/1PH/"840"/GE		5	010269	010269	010269	010269
7	RING,SNAP-5100-100 TRUARC	1		007769	007769	007769	007769
8	KEY	1		007775	011711	011711	011711
9	CORDAGE TERM&SEAL/20'	1		009053	009053	009053	009053
10	• SEAL,CORD-ASM	1		011064	011064	011064	011064
11	CORDAGE TERM&SEAL/20'	1	3	009054	009054	015829	015829
12	• SEAL,CORD-ASM/POWER CORD	1		009455	009455	015634	015634
13	CASE & SEAL "840"	1		008690	008690	015830	015830
14	• PLUG,TEST	3		034051	034051	015023	015023
15	• BEARING,RADIAL .4724 ID	1		006703	006703	006703	006703
16	• BEARING,7306-P "840/6840"	1		007765	007765	007765	007765
17	• SEAL,SQ-RING ADAPTER 840	1		007771	007771	007771	007771
18	• SENSOR,MOISTURE ASM "840	2		007770	007770	007770	007770
19	ADAPTER ASM GRINDER	1	6	009055	009055	009055	009055
20	• OIL,DIELECTRIC (11 OZ CAN)	1		009056	009056	009056	009056
21	• SEAL ASM,SHAFT "840"	2		007763	007763	007763	007763
22	• SEAL,SQ-RING SEAL PLATE "840/6840"	1		007772	007772	007772	007772
23	PLATE,SEAL-MACH."840"	1		007757	007757	007757	007757
24	IMPELLER-MACH BRASS	1		007758	007758	007758	007758
	IMPELLER-MACH DUCTILE IRON	1		153254	153254	153254	153254
25	HOUSING,PUMP-MACH "840"	1		008534	008534	008534	008534
26	CUTTER & DISC ASM GRINDER	1		009057	009057	009057	018603
27	SHIM SET FOR 820/840 GRINDERS	1		012632	012632	012632	012632
28	GUARD,CUTTER-PLASTIC 840	1		008528	008528	008528	008528
29	• SCREW,#6-32X.25RHM SL TC STLGR	1		001877	001877	001877	001877
30	• SCREW,.313-18 X1.25 HH CAP-SS	12		001908	001908	001908	001908
31	• SCREW,#10-24X.625"SH CAP SS.	4		007774	007774	007774	007774
32	• SCREW,.25-20 X .75LG HH SS (NYLOCK PRE-COAT 80)	1		009545	009545	009545	N/A
	• SCREW,.25-20 X 1 LG HH SS (NYLOCK PRE-COAT 80)			N/A	N/A	N/A	018602
33	• SCREW,.25-20X.75"SH CAP SS.	3		007768	007768	007768	007768
34	• SCREW,#10-24X.875-FLT SH CAP SS.	3		007761	007761	007761	007761
35	• WASHER,RETAINING-"840"	1		008533	008533	008533	008533
36	• WASHER,LOCK SS .312 ID	14		006402	006402	006402	006402
37	• SCREW,.313-18 X 1" HH CAP-SS	2		002608	002608	002608	002608
38	HANDLE-SS/SQ GUIDE RAIL/(GRINDER)	1		010373	010373	016801	016801
39	RESISTOR	1		013740	013740	013740	013740
40	• WASHER,FLAT SS	2		008773	008773	008773	008773
41	DISC, CUTTER	1		007735	007735	007735	007735
42	CUTTER & SHIM ASM/5 BLADE/.75" SCREW	1		019697	019697	019697	N/A
	CUTTER & SHIM ASM/5 BLADE/1" SCREW	1		N/A	N/A	N/A	019698
□	REBUILD KIT "840"	1		015832	015832	015833	018601

• Items included in Rebuild Kit.

□ Not Shown in Illustration.

## NOTES:

- 1) See FM0160 Price Sheet for listing of parts prices.
- 2) "NA" indicates, not applicable.
- 3) If an "X" follows Model No., or Date Mfg. on brass ID tag, consult factory for ordering of this part.
- 4) Housing, MTR & Stator (Item 4) is preassembled at factory and must be replaced as a unit. Stator is permanently attached to the Motor Housing. Plug (Item 14) and Seal, thru Wall Term. (Item 3) are replaceable.
- 5) When ordering these parts, customer must identify if G.E. or EMD.
- 6) When ordering this part, customer must determine if an adapter with wings is required and specify when placing order.

# REPLACEMENT PARTS LIST FOR MODELS "F840"

See back page for illustration.

REF NO.	DESCRIPTION	QTY	NOTES	MODELS:				
				F840-A	F840-B	F840-C	F840-D	F840-E
				11/93 thru 12/97	1/98 thru 2/99	3/99 thru 11/02	12/02 thru 8/06	9/06 thru Current
1	COVER & CORD 200/230/460/575V/3PH GRINDER	1	3	009062	009062	009062	015827	015827
2	• SEAL,SQ-RING COVER "840"	1		007773	007773	007773	007773	007773
3	• SEAL,THRU WALL TERM	9		003402	003402	003402	003402	003402
4	HOUSING,MTR-& STR 230V/3PH/"840"/EMD	1	4,5	009063	009063	009063	009063	009063
	HOUSING,MTR-& STR 230V/3PH/"840"/GE		4,5	010263	010263	010263	010263	010263
5	• OIL,DIELECTRIC-(67 OZ CAN)	1		009064	009064	009064	009064	009064
6	ROTOR ASM 200/230/460/575V/3PH/"840"/EMD	1	4,5	009065	009065	009065	009065	009065
	ROTOR ASM 200/230/460/575V/3PH/"840"/GE		5	010268	010268	010268	010268	010268
7	RING,SNAP-5100-100 TRUARC	1		007769	007769	007769	007769	007769
8	KEY	1		007775	011711	011711	011711	011711
9	CORDAGE TERM&SEAL/20'	1		009066	009066	012928	012928	012928
10	• SEAL,CORD-ASM	1		009067	009067	011071	N/A	N/A
	• SEAL,CORD-ASM/840/6840/SENSOR CD 5		012953	012953	012953	012953	012953	
11	CORDAGE TERM&SEAL/20'	1	3	009068	009068	009068	015828	015828
12	• SEAL,CORD-ASM/POWER CORD	1		009447	009447	009447	015634	015634
13	CASE & SEAL "840"	1		008690	008690	008690	015830	015830
14	• PLUG,TEST	3		034051	034051	034051	015023	015023
15	• BEARING,RADIAL .4724 ID	1		006703	006703	006703	006703	006703
16	• BEARING,7306-P "840/6840"	1		007765	007765	007765	007765	007765
17	• SEAL,SQ-RING ADAPTER 840	1		007771	007771	007771	007771	007771
18	• SENSOR,MOISTURE ASM "840"	2		007770	007770	007770	007770	007770
19	ADAPTER ASM GRINDER	1	6	009055	009055	009055	009055	009055
20	• OIL,DIELECTRIC (11 OZ CAN)	1		009056	009056	009056	009056	009056
21	• SEAL ASM,SHAFT "840"	2		007763	007763	007763	007763	007763
22	• SEAL,SQ-RING SEAL PLATE "840/6840"	1		007772	007772	007772	007772	007772
23	PLATE,SEAL-MACH."840"	1		007757	007757	007757	007757	007757
24	IMPELLER-MACH BRASS	1		007758	007758	007758	007758	007758
	IMPELLER-MACH DUCTILE IRON	1		153254	153254	153254	153254	153254
25	HOUSING,PUMP-MACH "840"	1		008534	008534	008534	008534	008534
26	CUTTER & DISC ASM GRINDER	1		009057	009057	009057	009057	018603
27	SHIM SET FOR 820/840 GRINDERS	1		012632	012632	012632	012632	012632
28	GUARD,CUTTER-PLASTIC 840	1		008528	008528	008528	008528	008528
29	• SCREW,#6-32X.25RHM SL TC STLGR	1		001877	001877	001877	001877	001877
30	• SCREW,.,313-18 X1.25 HH CAP-SS	12		001908	001908	001908	001908	001908
31	• SCREW,#10-24X.625"SH CAP SS.	4		007774	007774	007774	007774	007774
32	• SCREW,.,25-20 X .75LG HH SS (NYLOCK PRE-COAT 80)	1		009545	009545	009545	009545	N/A
	• SCREW,.,25-20 X 1 LG HH SS (NYLOCK PRE-COAT 80)		N/A	N/A	N/A	N/A	018602	
33	• SCREW,.,25-20X.75"SH CAP SS.	3		007768	007768	007768	007768	007768
34	• SCREW,#10-24X.875-FLT SH CAP SS.	3		007761	007761	007761	007761	007761
35	• WASHER,RETAINING-"840"	1		008533	008533	008533	008533	008533
36	• WASHER,LOCK SS .312 ID	14		006402	006402	006402	006402	006402
37	• SCREW,.,313-18 X 1" HH CAP-SS	2		002608	002608	002608	002608	002608
38	HANDLE-SS/SQ GUIDE RAIL/(GRINDER)	1		010373	010373	010373	016801	016801
39	• RESISTOR	1		013740	013740	013740	013740	013740
40	• WASHER,FLAT SS	2		008773	008773	008773	008773	008773
41	DISC, CUTTER	1		007735	007735	007735	007735	007735
42	CUTTER & SHIM ASM/5 BLADE/.75" SCREW	1		019697	019697	019697	01967	N/A
	CUTTER & SHIM ASM/5 BLADE/1" SCREW	1		N/A	N/A	N/A	N/A	019698
▫	REBUILD KIT "840"	1		009162	009162	009162	015831	018605
▫	REBUILD KIT "840" 5 CONDUCTOR SENSOR CORD	1		012934	012934	012934	015831	018605

**NOTES:**

- 1) See FM0160 Price Sheet for listing of parts prices.
- 2) "NA" indicates, not applicable.
- 3) If an "X" follows Model No., or Date Mfg. on brass ID tag, consult factory for ordering of this part.
- 4) Housing, MTR & Stator (Item 4) is preassembled at factory and must be replaced as a unit. Stator is permanently attached to the Motor Housing. Plug (Item 14) and Seal, thru Wall Term. (Item 3) are replaceable.
- 5) When ordering these parts, customer must identify if G.E. or EMD.
- 6) When ordering this part, customer must determine if an adapter with wings is required and specify when placing order.

• Items included in Rebuild Kit.

▫ Not Shown in Illustration.

# REPLACEMENT PARTS LIST FOR MODELS "G840"

See back page for illustration.

REF NO.	DESCRIPTION	QTY	NOTES	MODELS:				
				G840-A	G840-B	G840-C	G840-D	G840-E
				10/93 thru 12/97	1/98 thru 2/99	3/99 thru 11/02	12/02 thru 8/06	9/06 thru Current
1	COVER & CORD 200/230/460/575V/3PH GRINDER	1	3	009062	009062	009062	015827	015827
2	• SEAL,SQ-RING COVER "840"	1		007773	007773	007773	007773	007773
3	• SEAL,THRU WALL TERM	9		003402	003402	003402	003402	003402
4	HOUSING,MTR-& STR 460V/3PH/"840"/EMD	1	4,5	009070	009070	009070	009070	009070
	HOUSING,MTR-& STR 460V/3PH/"840"/GE		4,5	010264	010264	010264	010264	010264
5	• OIL,DIELECTRIC-(67 OZ CAN)	1		009064	009064	009064	009064	009064
6	ROTOR ASM 200/230/460/575V/3PH/"840"/EMD	1	4,5	009065	009065	009065	009065	009065
	ROTOR ASM 200/230/460/575V/3PH/"840"/GE		5	010268	010268	010268	010268	010268
7	RING,SNAP-5100-100 TRUARC	1		007769	007769	007769	007769	007769
8	KEY	1		007775	011711	011711	011711	011711
9	CORDAGE TERM&SEAL/20'	1		009066	009066	012928	012928	012928
10	• SEAL,CORD-ASM	1		009067	009067	011071	N/A	N/A
	• SEAL,CORD-ASM/840/6840/SENSOR CD 5		012953	012953	012953	012953	012953	
11	CORDAGE TERM&SEAL/20'	1	3	009068	009068	009068	015828	015828
12	• SEAL,CORD-ASM/POWER CORD	1		009447	009447	009447	015634	015634
13	CASE & SEAL "840"	1		008690	008690	008690	015830	015830
14	• PLUG,TEST	3		034051	034051	034051	015023	015023
15	• BEARING,RADIAL .4724 ID	1		006703	006703	006703	006703	006703
16	• BEARING,7306-P "840/6840"	1		007765	007765	007765	007765	007765
17	• SEAL,SQ-RING ADAPTER 840	1		007771	007771	007771	007771	007771
18	• SENSOR,MOISTURE ASM "840	2		007770	007770	007770	007770	007770
19	ADAPTER ASM GRINDER	1	6	009055	009055	009055	009055	009055
20	• OIL,DIELECTRIC (11 OZ CAN)	1		009056	009056	009056	009056	009056
21	• SEAL ASM,SHAFT "840"	2		007763	007763	007763	007763	007763
22	• SEAL,SQ-RING SEAL PLATE "840/6840"	1		007772	007772	007772	007772	007772
23	PLATE,SEAL-MACH."840"	1		007757	007757	007757	007757	007757
24	IMPELLER-MACH BRASS	1		007758	007758	007758	007758	007758
	IMPELLER-MACH DUCTILE IRON	1		153254	153254	153254	153254	153254
25	HOUSING,PUMP-MACH "840"	1		008534	008534	008534	008534	008534
26	CUTTER & DISC ASM GRINDER	1		009057	009057	009057	009057	018603
27	SHIM SET FOR 820/840 GRINDERS	1		012632	012632	012632	012632	012632
28	GUARD,CUTTER-PLASTIC 840	1		008528	008528	008528	008528	008528
29	• SCREW,#6-32X.25RHM SL TC STLGR	1		001877	001877	001877	001877	001877
30	• SCREW,.313-18 X1.25 HH CAP-SS	12		001908	001908	001908	001908	001908
31	• SCREW,#10-24X.625"SH CAP SS.	4		007774	007774	007774	007774	007774
32	• SCREW,.25-20 X .75LG HH SS (NYLOCK PRE-COAT 80)	1		009545	009545	009545	009545	N/A
	• SCREW,.25-20 X 1 LG HH SS (NYLOCK PRE-COAT 80)		N/A	N/A	N/A	N/A	018602	
33	• SCREW,.25-20X.75"SH CAP SS.	3		007768	007768	007768	007768	007768
34	• SCREW,#10-24X.875-FLT SH CAP SS.	3		007761	007761	007761	007761	007761
35	• WASHER,RETAINING-"840"	1		008533	008533	008533	008533	008533
36	• WASHER,LOCK SS .312 ID	14		006402	006402	006402	006402	006402
37	• SCREW,.313-18 X 1" HH CAP-SS	2		002608	002608	002608	002608	002608
38	HANDLE-SS/SQ GUIDE RAIL/(GRINDER)	1		010373	010373	010373	016801	016801
39	• RESISTOR	1		013740	013740	013740	013740	013740
40	• WASHER,FLAT SS	2		008773	008773	008773	008773	008773
41	DISC, CUTTER	1		007735	007735	007735	007735	007735
42	CUTTER & SHIM ASM/5 BLADE/.75" SCREW	1		019697	019697	019697	01967	N/A
	CUTTER & SHIM ASM/5 BLADE/1" SCREW	1		N/A	N/A	N/A	N/A	019698
▣	REBUILD KIT "840"	1		009162	009162	009162	015831	018605
▣	REBUILD KIT "840" 5 CONDUCTOR SENSOR CORD	1		012934	012934	012934	015831	018605

**NOTES:**

- 1) See FM0160 Price Sheet for listing of parts prices.
- 2) "NA" indicates, not applicable.
- 3) If an "X" follows Model No., or Date Mfg. on brass ID tag, consult factory for ordering of this part.
- 4) Housing, MTR & Stator (Item 4) is preassembled at factory and must be replaced as a unit. Stator is permanently attached to the Motor Housing. Plug (Item 14) and Seal, thru Wall Term. (Item 3) are replaceable.
- 5) When ordering these parts, customer must identify if G.E. or EMD.
- 6) When ordering this part, customer must determine if an adapter with wings is required and specify when placing order.

• Items included in Rebuild Kit.

▣ Not Shown in Illustration.

# REPLACEMENT PARTS LIST FOR MODELS "J840"

See back page for illustration.

REF NO.	DESCRIPTION	QTY	NOTES	MODELS:				
				J840-A	J840-B	J840-C	J840-D	J840-E
				10/93 thru 12/97	1/98 thru 2/99	3/99 thru 11/02	12/02 thru 8/06	9/06 thru Current
1	COVER & CORD 200/230/460/575V/3PH GRINDER	1	3	009062	009062	009062	015827	015827
2	• SEAL,SQ-RING COVER "840"	1		007773	007773	007773	007773	007773
3	• SEAL,THRU WALL TERM	9		003402	003402	003402	003402	003402
4	HOUSING,MTR-& STR 200V/3PH/"840"/EMD	1	4,5	009069	009069	009069	009069	009069
	HOUSING,MTR-& STR 200V/3PH/"840"/GE		4,5	010265	010265	010265	010265	010265
5	• OIL,DIELECTRIC-(67 OZ CAN)	1		009064	009064	009064	009064	009064
6	ROTOR ASM 200/230/460/575V/3PH/"840"/EMD	1	4,5	009065	009065	009065	009065	009065
	ROTOR ASM 200/230/460/575V/3PH/"840"/GE		5	010268	010268	010268	010268	010268
7	RING,SNAP-5100-100 TRUARC	1		007769	007769	007769	007769	007769
8	KEY	1		007775	011711	011711	011711	011711
9	CORDAGE TERM&SEAL/20'	1		009066	009066	012928	012928	012928
10	• SEAL,CORD-ASM	1		009067	009067	011071	N/A	N/A
	• SEAL,CORD-ASM/840/6840/SENSOR CD 5		012953	012953	012953	012953	012953	
11	CORDAGE TERM&SEAL/20'	1	3	009068	009068	009068	015828	015828
12	• SEAL,CORD-ASM/POWER CORD	1		009447	009447	009447	015634	015634
13	CASE & SEAL "840"	1		008690	008690	008690	015830	015830
14	• PLUG,TEST	3		034051	034051	034051	015023	015023
15	• BEARING,RADIAL .4724 ID	1		006703	006703	006703	006703	006703
16	• BEARING,7306-P "840/6840"	1		007765	007765	007765	007765	007765
17	• SEAL,SQ-RING ADAPTER 840	1		007771	007771	007771	007771	007771
18	• SENSOR,MOISTURE ASM "840"	2		007770	007770	007770	007770	007770
19	ADAPTER ASM GRINDER	1	6	009055	009055	009055	009055	009055
20	• OIL,DIELECTRIC (11 OZ CAN)	1		009056	009056	009056	009056	009056
21	• SEAL ASM,SHAFT "840"	2		007763	007763	007763	007763	007763
22	• SEAL,SQ-RING SEAL PLATE "840/6840"	1		007772	007772	007772	007772	007772
23	PLATE,SEAL-MACH."840"	1		007757	007757	007757	007757	007757
24	IMPELLER-MACH BRASS	1		007758	007758	007758	007758	007758
	IMPELLER-MACH DUCTILE IRON	1		153254	153254	153254	153254	153254
25	HOUSING,PUMP-MACH "840"	1		008534	008534	008534	008534	008534
26	CUTTER & DISC ASM GRINDER	1		009057	009057	009057	009057	018603
27	SHIM SET FOR 820/840 GRINDERS	1		012632	012632	012632	012632	012632
28	GUARD,CUTTER-PLASTIC 840	1		008528	008528	008528	008528	008528
29	• SCREW,#6-32X.25RHM SL TC STLGR	1		001877	001877	001877	001877	001877
30	• SCREW,.313-18 X1.25 HH CAP-SS	12		001908	001908	001908	001908	001908
31	• SCREW,#10-24X.625"SH CAP SS.	4		007774	007774	007774	007774	007774
32	• SCREW,.25-20 X .75LG HH SS (NYLOCK PRE-COAT 80)	1		009545	009545	009545	009545	N/A
	• SCREW,.25-20 X 1 LG HH SS (NYLOCK PRE-COAT 80)		N/A	N/A	N/A	N/A	018602	
33	• SCREW,.25-20X.75"SH CAP SS.	3		007768	007768	007768	007768	007768
34	• SCREW,#10-24X.875-FLT SH CAP SS.	3		007761	007761	007761	007761	007761
35	• WASHER,RETAINING-"840"	1		008533	008533	008533	008533	008533
36	• WASHER,LOCK SS .312 ID	14		006402	006402	006402	006402	006402
37	• SCREW,.313-18 X 1" HH CAP-SS	2		002608	002608	002608	002608	002608
38	HANDLE-SS/SQ GUIDE RAIL/(GRINDER)	1		010373	010373	010373	016801	016801
39	• RESISTOR	1		013740	013740	013740	013740	013740
40	• WASHER,FLAT SS	2		008773	008773	008773	008773	008773
41	DISC, CUTTER	1		007735	007735	007735	007735	007735
42	CUTTER & SHIM ASM/5 BLADE/.75" SCREW	1		019697	019697	019697	01967	N/A
	CUTTER & SHIM ASM/5 BLADE/1" SCREW	1		N/A	N/A	N/A	N/A	019698
▣	REBUILD KIT "840"	1		009162	009162	009162	015831	018605
▣	REBUILD KIT "840" 5 CONDUCTOR SENSOR CORD	1		012934	012934	012934	015831	018605

**NOTES:**

- 1) See FM0160 Price Sheet for listing of parts prices.
- 2) "NA" indicates, not applicable.
- 3) If an "X" follows Model No., or Date Mfg. on brass ID tag, consult factory for ordering of this part.
- 4) Housing, MTR & Stator (Item 4) is preassembled at factory and must be replaced as a unit. Stator is permanently attached to the Motor Housing. Plug (Item 14) and Seal, thru Wall Term. (Item 3) are replaceable.
- 5) When ordering these parts, customer must identify if G.E. or EMD.
- 6) When ordering this part, customer must determine if an adapter with wings is required and specify when placing order.

• Items included in Rebuild Kit.

▣ Not Shown in Illustration.

# REPLACEMENT PARTS LIST FOR MODELS "BA840"

See back page for illustration.

REF NO.	DESCRIPTION	QTY	NOTES	MODELS:				
				BA840-A	BA840-B	BA840-C	BA840-D	BA840-E
				10/93 thru 12/97	1/98 thru 2/99	3/99 thru 11/02	12/02 thru 8/06	9/06 thru Current
1	COVER & CORD 200/230/460/575V/3PH GRINDER	1	3	009062	009062	009062	015827	015827
2	• SEAL,SQ-RING COVER "840"	1		007773	007773	007773	007773	007773
3	• SEAL,THRU WALL TERM	9		003402	003402	003402	003402	003402
4	HOUSING,MTR-& STR 575V/3PH/"840"/EMD	1	4,5	010669	010669	010669	010669	010669
	HOUSING,MTR-& STR 575V/3PH/"840"/GE		4,5	010670	010670	010670	010670	010670
5	• OIL,DIELECTRIC-(67 OZ CAN)	1		009064	009064	009064	009064	009064
6	ROTOR ASM 200/230/460/575V/3PH/"840"/EMD	1	4,5	009065	009065	009065	009065	009065
	ROTOR ASM 200/230/460/575V/3PH/"840"/GE		5	010268	010268	010268	010268	010268
7	RING,SNAP-5100-100 TRUARC	1		007769	007769	007769	007769	007769
8	KEY	1		007775	011711	011711	011711	011711
9	CORDAGE TERM&SEAL/20'	1		009066	012928	012928	012928	012928
10	• SEAL,CORD-ASM	1		009067	009067	011071	N/A	N/A
	• SEAL,CORD-ASM/840/6840/SENSOR CD 5		012953	012953	012953	012953	012953	
11	CORDAGE TERM&SEAL/20'	1	3	009068	009068	009068	015828	015828
12	• SEAL,CORD-ASM/POWER CORD	1		009447	009447	009447	015634	015634
13	CASE & SEAL "840"	1		008690	008690	008690	015830	015830
14	• PLUG,TEST	3		034051	034051	034051	015023	015023
15	• BEARING,RADIAL .4724 ID	1		006703	006703	006703	006703	006703
16	• BEARING,7306-P "840/6840"	1		007765	007765	007765	007765	007765
17	• SEAL,SQ-RING ADAPTER 840	1		007771	007771	007771	007771	007771
18	• SENSOR,MOISTURE ASM "840"	2		007770	007770	007770	007770	007770
19	ADAPTER ASM GRINDER	1	6	009055	009055	009055	009055	009055
20	• OIL,DIELECTRIC (11 OZ CAN)	1		009056	009056	009056	009056	009056
21	• SEAL ASM,SHAFT "840"	2		007763	007763	007763	007763	007763
22	• SEAL,SQ-RING SEAL PLATE "840/6840"	1		007772	007772	007772	007772	007772
23	PLATE,SEAL-MACH."840"	1		007757	007757	007757	007757	007757
24	IMPELLER-MACH BRASS	1		007758	007758	007758	007758	007758
	IMPELLER-MACH DUCTILE IRON	1		153254	153254	153254	153254	153254
25	HOUSING,PUMP-MACH "840"	1		008534	008534	008534	008534	008534
26	CUTTER & DISC ASM GRINDER	1		009057	009057	009057	009057	018603
27	SHIM SET FOR 820/840 GRINDERS	1		012632	012632	012632	012632	012632
28	GUARD,CUTTER-PLASTIC 840	1		008528	008528	008528	008528	008528
29	• SCREW,#6-32X.25RHM SL TC STLGR	1		001877	001877	001877	001877	001877
30	• SCREW,,313-18 X1.25 HH CAP-SS	12		001908	001908	001908	001908	001908
31	• SCREW,#10-24X.625"SH CAP SS.	4		007774	007774	007774	007774	007774
32	• SCREW,.25-20 X .75LG HH SS (NYLOCK PRE-COAT 80)	1		009545	009545	009545	009545	N/A
	• SCREW,.25-20 X 1 LG HH SS (NYLOCK PRE-COAT 80)		N/A	N/A	N/A	N/A	018602	
33	• SCREW,.25-20X.75"SH CAP SS.	3		007768	007768	007768	007768	007768
34	• SCREW,#10-24X.875-FLT SH CAP SS.	3		007761	007761	007761	007761	007761
35	• WASHER,RETAINING-"840"	1		008533	008533	008533	008533	008533
36	• WASHER,LOCK SS .312 ID	14		006402	006402	006402	006402	006402
37	• SCREW,.313-18 X 1" HH CAP-SS	2		002608	002608	002608	002608	002608
38	HANDLE-SS/SQ GUIDE RAIL/(GRINDER)	1		010373	010373	010373	016801	016801
39	• RESISTOR	1		013740	013740	013740	013740	013740
40	• WASHER,FLAT SS	2		008773	008773	008773	008773	008773
41	DISC, CUTTER	1		007735	007735	007735	007735	007735
42	CUTTER & SHIM ASM/5 BLADE/.75" SCREW	1		019697	019697	019697	01967	N/A
	CUTTER & SHIM ASM/5 BLADE/1" SCREW	1		N/A	N/A	N/A	N/A	019698
▣	REBUILD KIT "840"	1		009162	009162	012934	015831	018605
▣	REBUILD KIT "840" 5 CONDUCTOR SENSOR CORD	1		012934	012934	012934	015831	018605

• Items included in Rebuild Kit.

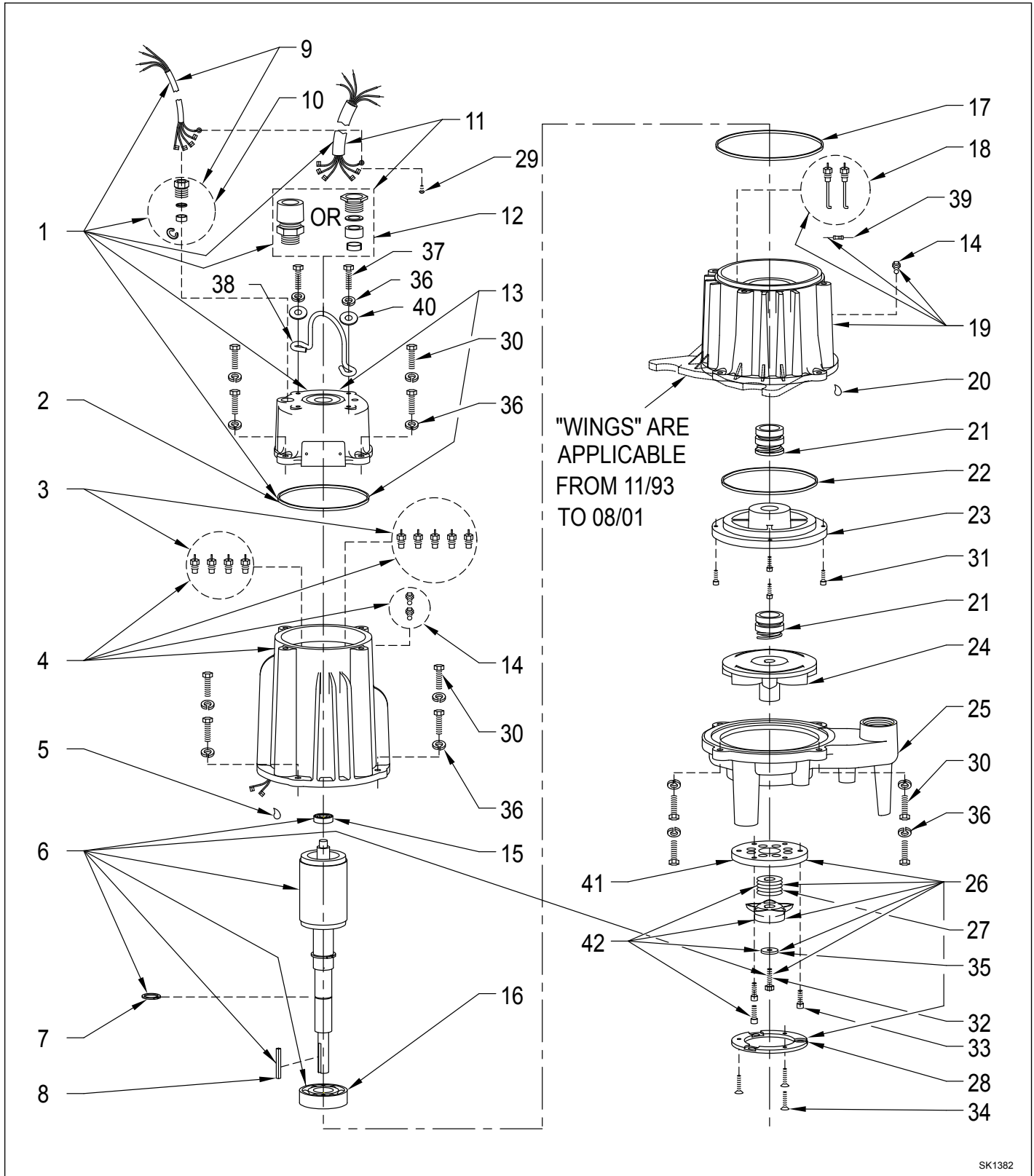
▣ Not Shown in Illustration.

See NOTES on page 8.

**NOTES for BA840 Parts List:**

- 1) See FM0160 Price Sheet for listing of parts prices.
- 2) "NA" indicates, not applicable.
- 3) If an "X" follows Model No., or Date Mfg. on brass ID tag, consult factory for ordering of this part.
- 4) Housing, MTR & Stator (Item 4) is preassembled at factory and must be replaced as a unit. Stator is permanently attached to the Motor Housing. Plug (Item 14) and Seal, thru Wall Term. (Item 3) are replaceable.
- 5) When ordering these parts, customer must identify if G.E. or EMD.
- 6) When ordering this part, customer must determine if an adapter with wings is required and specify when placing order.

**REPLACEMENT PARTS ILLUSTRATION FOR 840 - ALL MODELS**



SK1382